

TABLE TOP CHAMBER WITH LABEL PRINTER

The world's first vacuum sealer with integrated label printer.



Minipack XP-Series chamber vacuum sealers are equipped with the world's most innovative features, such as customizable programming and integrated label printer. Depending on your product dimensions and throughput, Minipack offers a choice of seal bar length, chamber and lid height, vacuum pump, and optional equipment. Smart design, easy to use controls, a self-diagnostic system, strong performance, and low maintenance make these machines the preferred products on the market.



DISPLAY, CONTROLS & PROGRAMMABILITY

All models are equipped with an integrated product label printer and a water resistant digital display featuring user-settable preferences and up to 100 customizable programs. The electronic millibar sensor precisely measures the vacuum level and triggers the chosen sealing and de-evacuation modes.



CHAMBER & SEAL BARS

seamless and easy to clean surfaces

Benefit from optimized throughput by the perfect combination of length and positioning of seal bars. Pop-out seal bars and seamless stainless steel chambers allow for easy sanitation.

PERFORMANCE

powerful and reliable

All models are equipped with a powerful Busch or DVP vacuum pump, which are able to process more than 2-3 cycles per minute. Choose a pump capacity from 7 m³/h up to 24 m³/h.

SMART TECHNOLOGY FEATURES

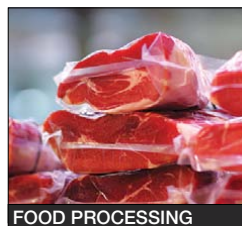
- Programmable direct thermal printer
- 100 user-settable programs
- Hot food cycle: vacuum hot liquids or food
- Pop-out seal bars with options of wide flat seal, dual flat seal, dual convex seal, or top & bottom seal
- Expose foods to extended vacuum cycles for marinating and infusing
- Moisture quick stop: stops vacuuming instantly and seals pouch (for liquid products)
- Programmable sealing time: ensure optimized seal for any thickness of bag
- External channel bag evacuation: vacuum and seal outside of the chamber
- Excess bag cut-off: for food safety and better bag handling
- Tray for liquids: vacuum liquid products fast and easy
- Unique waffle-pattern sealing: special pattern offers the highest quality in seal strength
- Hygienic seamless chamber
- Evacuation filter kit: prevents oil and pump from contamination when vacuuming dusty products
- Inert gas flush kit: option for modified atmosphere packaging



FOOD RETAIL



FOOD SERVICE



FOOD PROCESSING







MANUFACTURING



HACCP Assistance Available

6 GOOD REASONS TO CHOOSE MINIPACK:

- Focused on value and user-centered innovation
- Over 40 years track record as innovator
- Reliability and cost advantage over the long run
- Committed to customer service and support
- Certified quality manufacturing – ISO 9001:2000
- Worldwide distribution network and technical assistance

MVS XP-Series — Table Top Chamber Vacuum Sealers with Label Printer		MVS 31XP	MVS 41XP	MVS 45XP	MVS 45XPII
					
Chamber & Seal Bars	Chamber Width x Length	12.75" x 11.75"	29.00" x 13.50"	18.50" x 18.00"	18.50" x 18.00"
	Height (Chamber + Dome/Lid = Total)	4.50" + 2.00" = 6.50"	3.00" + 1.00" = 4.00"	4.50" + 4.00" = 8.50"	4.50" + 4.00" = 8.50"
	Number of Seal Bars (removable)	1	3	1	2
	Position of Seal Bars	Front	Front, Left & Right	Front	Left & Right
	Seal Bar Length	12.25"	24.75" (F) / 2 x 12.25" (L & R)	17.75"	2 x 17.75"
	Distance between Seal Bars	-	25.00" (Left to Right)	-	14.00"
	4 mm Seal + 1 mm Cut-Off Seal	✓	✓	✓	✓
	Unique Waffle-Pattern Sealing	✓	✓	✓	✓
	Hygienic Seamless Chamber	✓	✓	✓	✓
	Bag Types	Polynylon / Shrink / Channel	Polynylon / Shrink	Polynylon / Shrink	Polynylon / Shrink
Pop-Out Seal Bars	✓	✓	✓	✓	
Independent Power to each Seal Bar	✓	✓	✓	✓	
Performance	Pump Type	DVP LB6 Oil Rotary	Busch KB Oil Rotary	Busch KB Oil Rotary	Busch KB Oil Rotary
	Cycles per Minute*	up to 3	up to 3	up to 3	up to 3
	Free Air Displacement @ 50Hz	6 m³/h	20 m³/h	20 m³/h	20 m³/h
	Free Air Displacement @ 60Hz	7 m³/h	24 m³/h	24 m³/h	24 m³/h
	Pump Power Rating	0.5 hp	1.25 hp	1.25 hp	1.25 hp
Power Supply	115V / 7.5A	115V / 19A	115V / 13A	115V / 17A	
Display & Controls	Water Resistant Digital Display	✓	✓	✓	✓
	LCD Full Description Display	✓	✓	✓	✓
	Selectable Control (mbar or %)	✓	✓	✓	✓
	Electronic Millibar Sensor	✓	✓	✓	✓
	Customizable Programs	100	100	100	100
Operational Features	Programmable Direct Thermal Printer	✓	✓	✓	✓
	Printing Features: Item Name, Date Coding, Ingredients, Operator Code, Unit Pricing	✓	✓	✓	✓
	Programmable Sealing Time	✓	✓	✓	✓
	Programmable Vacuum Time (mbar or %)	✓	✓	✓	✓
	Moisture Quick Stop	✓	✓	✓	✓
	Programmable Hot Food Cycle	✓	✓	✓	✓
	Programmable Infusion Cycle	✓	✓	✓	✓
	External Channel Bag Evacuation	✓	-	-	-
	Soft Air (slow return of air)	✓	✓	✓	✓
	Extra Vacuum (30 sec)	✓	✓	✓	✓
	Excess Bag Cut-Off	✓	✓	✓	✓
	Tray for Liquids	✓	Optional	✓	✓
High Volume Density Plates	✓	✓	✓	✓	
Service	Pump Conditioning	✓	✓	✓	✓
	Self Diagnostic	✓	✓	✓	✓
	Indicating Display	✓	✓	✓	✓
	Programmable Service Reminder	✓	✓	✓	✓
	1 Year Limited Warranty	✓	✓	✓	✓
Housing & Dimensions	Material	Stainless 304	Stainless 304	Stainless 304	Stainless 304
	Lid Type	Transparent with Dome	Transparent with Dome	Transparent with Dome	Transparent with Dome
	Width x Length	15.50" x 20.00"	34.00" x 20.50"	21.25" x 24.50"	21.25" x 24.50"
	Height (Lid open/closed)	27.00" / 15.50"	28.00" / 17.00"	31.25" / 18.50"	31.25" / 18.50"
	Recessed Lifting Cups	-	✓	✓	✓
	Leveling Legs	✓	✓	✓	✓
Weight (Net/Shipping)	80 lbs / 92 lbs	209 lbs / 242 lbs	177 lbs / 199 lbs	182 lbs / 204 lbs	
Optional Seal Bars	Wide Flat Seal (6mm + 1mm Cut-Off Seal)	✓	✓	✓	✓
	Dual Flat Seal (2 x 4 mm)	✓	✓	✓	✓
	Dual Convex Seal (2 x 3.5 mm)	✓	✓	✓	✓
	Top & Bottom Seal	-	-	✓	✓
Optional Features	Inert Gas Flush Kit	✓	✓	✓	✓
	Evacuation Filter Kit	✓	✓	✓	✓
	NSF 4" Legs	-	✓	✓	✓
	220V Single Phase @ 50/60Hz	✓	✓	✓	✓

*Depends on type of product, film and operator ability.



Specifications may change without notice.